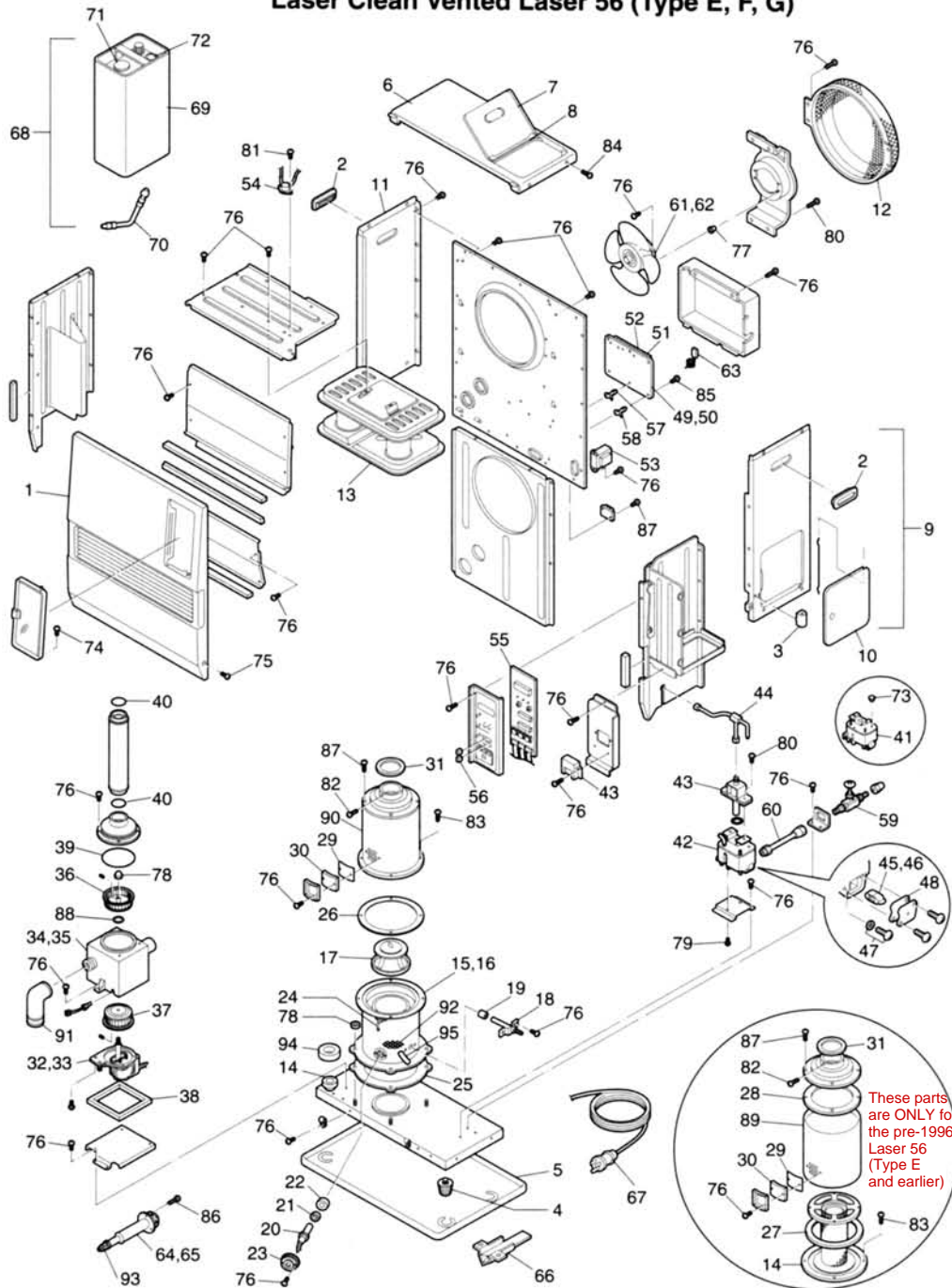


## Section 6

## Trouble Shooting

### 6-6 PARTS DESCRIPTION

Laser Clean Vented Laser 56 (Type E, F, G)



## Section 6

## Trouble Shooting

### 6-6 PARTS DESCRIPTION

#### Laser Clean Vented Laser 56 (Type E, F, G)

REF #	PART #	PART NAME	REF #	PART #	PART NAME
1	20478346	Front panel assembly	50	20478512	Main circuit board (Type F, G)
2	20475804	Carrying handle	51	20478378	Fuse A
3	20450007	Plumb bob	52	20478379	Fuse B
4	20474970	Adjustable leg	53	20479217	Transformer
5	20475929	Drip tray	54	20478306	High limit switch
6	20475960	Top plate with tank lid	55	20478376	Indicator lamp circuit
7	20475965	Tank lid with pin	56	20478301	Knob for temp selector
8	20475566	Tank lid pin	57	20477414	PCB Support
9	20478063	Right side panel with access door	58	20478314	PCB Support (S)
10	20475570	Level valve access door with pin	59	10005597	Fusible link valve
11	20478064	Left side panel	60	20475952	Leveler fuel pipe
12	20475072	Fan cover	61	20475569	Circulation fan motor (Type E) (=20478569)
13	20478044	Heat exchanger			
14	20478008	Heat element assembly	62	20478569	Circulation fan motor (Type F, G)
15	20478342	Burner assembly (Type E) (=20478542)	63	20478373	Thermistor
			64	20479801	Standard flue pipe (Type E) (=20478501)
16	20478542	Burner assembly (Type F, G)			
17	20478343	Burner ring	65	20478501	Standard flue pipe (Type F, G) (=20479801)
18	20478026	Fuel nozzle			
19	20478383	Fuel nozzle gasket	66	20474925	Oil catch
20	20475518	Igniter	67	20475535	Power supply cord
21	20474080	Igniter gasket (=17185580)	68	20475922	Removable fuel tank with hose
22	20474921	Igniter guide gasket	69	20475722	Removal fuel tank without hose
23	20474920	Igniter cover	70	20475925	Fuel supply hose
24	20475011	Primary flame rod	71	20475924	Fuel tank cap
25	20475094	Burner gasket	72	20475923	Fuel gauge
26	20475093	Heat chamber gasket	73	20474014	Spacer A (Type E)
27	20475082	Lower gasket	74	20474059	Holder A
28	20475081	Upper gasket	75	20478156	Screw 1S
29	20475831	Mica window	76	20474050	Screw C (=20478091)
30	20475881	Peep window gasket	77	20474039	Insulator A
31	20474992	Joint packing	78	20474057	Flange nut
32	20478337	Blower motor assembly (Type E, F)	79	20475553	Screw 1P
33	20478737	Blower motor assembly (Type G)	80	20474055	Screw O
34	20478347	Blower motor assembly with case (Type E, F) (=20478747)	81	20450120	Screw for igniter unit
			82	20478090	Screw 1T
35	20478747	Blower motor assembly with case (Type G)	83	20478091	Screw 1U (=20474050)
			84	20475554	Screw 1Q
36	20475971	Blower motor exhaust fan	85	20474049	Screw R
37	20475983	Blower motor intake fan	86	20474272	Screw M
38	20475978	Rubber mat	87	20474051	Screw D
39	20478082	O-ring (P110)	88	20475874	Washer for blower motor
40	20475977	O-ring (P49)	89	20478009	Heat chamber assembly (Type E, F) (=20478509)
41	20475534	Fuel sump (Type E)			
42	20478534	Fuel sump (Type F, G)	90	20478509	Heat chamber assembly (Type G)
43	20478319	Fuel pump	91	20474983	Outlet adapter
44	20478041	Fuel pipe assembly	92	20474113	Burner mat
45	20475550	Fuel inlet strainer (Type E) (=20478550)	93	20478401	Air deflector (Type E)
			94	20478366	Air damper (P25)
46	20478550	Fuel inlet strainer (Type F, G)	95	20478683	Draft tube
47	20475551	Drain screw with O-ring	96	20478395	Instruction manual (Type E)
48	20475552	Strainer gasket	97	20478595	Instruction manual (Type F, G)
49	20478312	Main circuit board (Type E)	98	20478399	Carton (Type E)
			99	20478599	Carton (Type F) (=20478399)
			100	20478799	Carton (Type G) (=20478399)

Note: (=Interchangeable Part #)  
 Laser 56 Type E contains 1993 modifications.  
 Laser 56 Type F and Type G contains 1994 modifications.