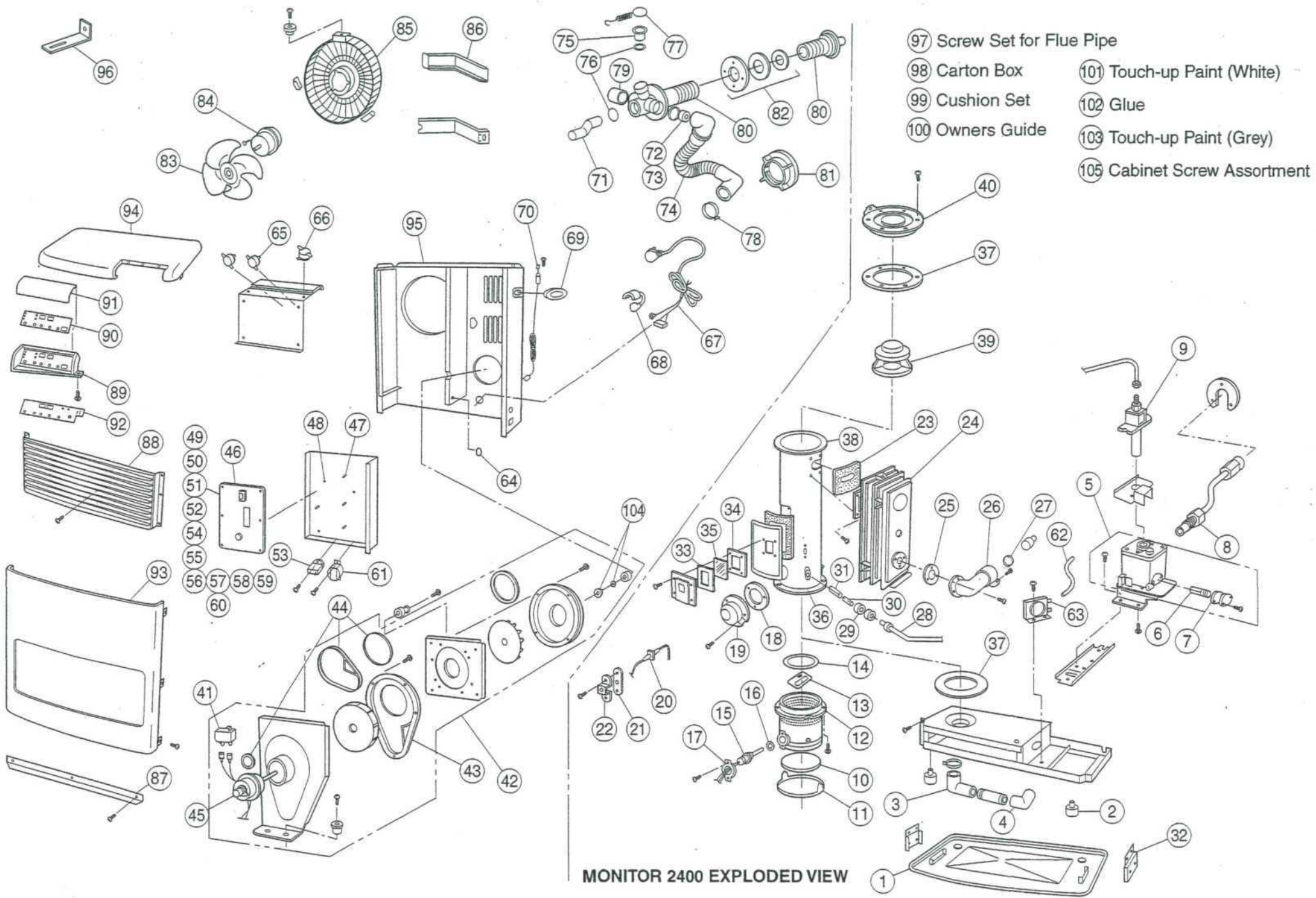


MONITOR 2400 SERVICE PARTS LIST

MONITOR 2400 SERVICE PARTS LIST

ITEM NO.	PART NO.	DESCRIPTION	ITEM NO.	PART NO.	DESCRIPTION
1	6724	SPILL TRAY	55	6254	RELAY RL1(For Reference Only)
2	5019	ADJUSTABLE LEG	56	6255	TRIAC(Q1)(For Reference Only)
3	6301	AIR SUPPLY HOSE(A)	57	6257	PHOTO TRIAC(IC3)(For Reference Only)
4	6302	AIR SUPPLY HOSE(B)	58	6700	PHOTO TRIAC(IC4)(For Reference Only)
5	6469	Constant level valve only 1998 441/422	59	6701	PHOTO TRIAC(IC5)(For Reference Only)
6	6470	C.L.V. strainer 1998 441/422	60	6204	PHOTO COUPLER(IC6)(For Reference Only)
7	6471	Strainer gasket 1998 441/422	61	6702	POWER TRANSFORMER
8	6725	FUEL PIPE	62	6326	AIR LINE
9	6726	SOLENOID PUMP	63	6703	AIR PRESSURE SWITCH
10	6357	GASKET(1)	64	6136	RUBBER BUSHING
11	6357A	GASKET(1) RETAINING PLATE	65	6704	OVER HEAT THERMOSTAT
12	6401	BURNER	66	6705	FAN THERMOSTAT
13	6363	BURNER CLOTH	67	6706	POWER SUPPLY CORD
14	6358	ROPE GASKET	68	4833	CORD BUSHING
15	6311	HEATER(IGNITER)	69	6707	CARRYING HANDLE
16	6115	GASKET(3)	70	6708	SENSOR ASSY
17	6402	IGNITER BRACKET	71	4004	JOINT PIPE
18	6354	HEATER COVER PACKING	72	6407	AIR DAMPER(E)
19	6403	IGNITER COVER	73	6408	AIR DAMPER(S)
20	6355	FLAME DETECTIVE PLUG	74	6145	AIR SUPPLY HOSE ASSY
21	6119	PLUG PACKING	75	4014	EXHAUST OUTLET CAP
22	6196	FL PLUG BRACKET	76	4016	AIR PORT O RING
23	6313	GASKET(4)	77	4006	PIPE HOLDER
24	6314	HEAT EXCHANGER ASSY	78	4008	HOSE BAND
25	6122	GASKET(6)	79	4805	AIR OUTLET CAP
26	6123	EXHAUST DUCT	80	8050	FLUE PIPE A/B
27	6176	O-RING(P39)	81	6723A	SLEEVE NUT
28	6473	Oil sump pipe 1998 M441	82	6148	SLEEVE FLANGE SET
29	6164	JOINT SEAL PACKING	83	6075	FAN BLADE
30	6352	FUEL NOZZLE	84	6709	CIRCULATION MOTOR
31	6353	FUEL NOZZLE COVER	85	6710	BLOWER GUARD
32	6404	BASE TRAY RETAINER	86	6455	WIRING GUARD
33	6124	WINDOW GASKET	87	6711	UNDER COVER
34	6125	WINDOW FRAME GASKET	88	6712	LOUVER
35	6405	WINDOW GLASS	89	6713	PLASTIC BUTTON PANEL
36	6350	WINDOW BASE GASKET	90	6714	LAMP PANEL
37	6317	CHAMBER GASKET	91	6715	CONTROL COVER
38	6349	COMBUSTION CHAMBER ASSY	92	6716	SWITCH & LAMP ASSY
39	6356	COMBUSTION RING ASSY	93	6717	FRONT COVER
40	6321	CHAMBER CAP	94	6718	TOP COVER
41	6727	CAPACITOR(3.0μF)	95	6719	CABINET ASSY
42	6728	COMBUSTION BLOWER ASSY	96	6194	WALL CLAMPS
43	6729	SUCTION CASE A ASSY	97	6197	SCREW SET FOR FLUE PIPE
44	6144	SEAL PACKING	98	6720	CARTON BOX
45	6730	MOTOR FOR COMBUSTION	99	6721	CUSHION SET
46	6731	PWB ASSY	100	1157	OWNERS GUIDE
47	6461	PWB SPACER CLIP(A)	101	8216	TOUCH-UP PAINT(WHITE)
48	6462	PWB SPACER CLIP(B)	102	8217	GLUE
49	6732	MICROPROCESSOR	103	6722	TOUCH-UP PAINT(M2400 GREY)
50	6733	BUZZER	104	6348A	Combustion Blower Assy Nut and Retaining Washer
51	6172	FUSE(250V, 10A)			
52	6173	FUSE(250V, 2A)	105	6735	Cabinet Screw Assortment
53	6734	FAN CAPACITOR(1.5μF)(For Reference Only)			
54	6187	TR ARRAY(M54563P) IC10(For Reference Only)			

Part # 6726 is now
Part # 6450



MONITOR 2400 EXPLODED VIEW